

3. Gently apply a little pressure and slowly move the toothbrush head back and forth between the teeth. Do not use excessive force when moving.

4. To clean the teeth more effectively (see figure 5), divide the mouth into 4 quadrants. Top teeth two quadrants, bottom teeth two quadrants. Front and back. Start by brushing each area for 30 seconds. Brush every 30 seconds. The toothbrush will pause every 30 seconds to remind you to move to the next quadrant.

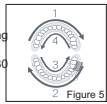


Figure 5

The two-minute smart timer ends after two minutes automatically powering off the toothbrush. (Figure 5)

6. Clean the toothbrush head and handle with clean water. Wash and tap the toothbrush head to make sure there is no food residue in the bristles.

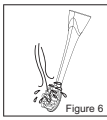


Figure 6

7. Remove the brush head in the direction shown in figure 7, remove excess water and wipe clean. (Figure 7)

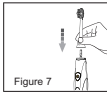


Figure 7

Daily Maintenance

Please unplug before cleaning and maintenance.

Cleaning the brush head (Fig. 9)

1. Remove the toothbrush head from the handle.
2. Rinse the toothbrush head and bristles with clean water.
3. It is recommended to replace brush heads every 3 months.

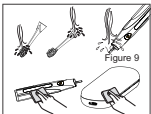


Figure 9

Clean the handle with water, wipe dry (Fig. 9)

Cleaning the bottom of charging box (Fig. 9)

1. Wipe off any dirt on the surface of the bottom of charging box with a soft cloth.
2. Please wipe the port part of the charging box with a dry cloth every 6 months to avoid accumulation and grounding.

Fault Diagnosis

Problem	Possible causes of problems	Solutions
Toothbrush does not work	New purchase or more than 3 months of no use	Please charge for more than 24 hours
When in use, the vibration suddenly weakens	You are brushing your teeth too hard	Brush your teeth gently.
After charging, the toothbrush Works for a short time	The battery has reached the end of its service life	Please contact the seller
	Insufficient charging time	Please recharge more than 24 hours before using

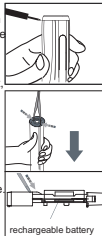
Waste Disposal

This product uses a recyclable lithium-ion battery. Before discarding the product, the battery must be removed and disposed according to local waste management regulations.

Recycling or Disposal.

If in doubt, consult your local waste management department.

1. Before removing the battery, make sure that the battery is discharged and has no power. Press the switch button and let the toothbrush run until it cannot be turned on.
2. Pry the bottom cover of the handle with a screwdriver and remove the bottom cover of the handle Cover.
3. Hold the handle upside down, press down the handle shaft, and pry open 2 at the same time. Take out the internal components.
4. Use pliers or tweezers to break the connecting wire of the battery and remove it.
5. Remove the battery from the plastic rack.
6. Properly recycle or dispose of batteries and asper local disposal requirements.



rechargeable battery

Note: do not short circuit the positive and negative poles of the battery. Remove the battery Do not energize the product after the

Product Warranty

Thank you for choosing the company's brand series of products. Important information about the company's products during the warranty period. The warranty shall begin from the date of purchase. The warranty contents during the warranty period are as follows:

1. This warranty card is only valid in the people's Republic of China (except Hong Kong, Macao and Taiwan).
2. Within one year from the date of purchase, any maintenance station personnel authorized by the company's brand shall be confirmed. In the case of improper use, you are liable for product damage caused to the manufacturing process or component parts.
3. This free warranty service does not include vulnerable parts (such as toothbrush head, etc.).
4. Please pay attention to the following situations. You can't get free warranty service even within the warranty period:
 - 1) When the warranty card and purchase certificate cannot be presented;
 - 2) Damage caused by failure to use, maintain and store according to the requirements of the product manual;
 - 3) Failure caused by self disassembly and repair without the inspection of the maintenance station personnel authorized by the company's brand In case of;
 - 4) Alter the contents of the warranty form and purchase certificate without authorization;
 - 5) Other damages caused by force majeure (such as natural disasters, abnormal voltage, etc.)
 - 6) Product aging and wear caused by normal use, but does not affect the normal use of the product In this case.
 - 7) In case of failure caused by general use outside the home (such as industrial and commercial use).

User Guide For MyPleasurePlus Lollipop Head

1. Remove sonic brush head if attached and place in travel case for later use.
2. Clean brush handle to remove any toothpaste residue.
3. Attach MyPleasurePlus Lollipop Head onto the sonic toothbrush base.
4. Press power button until you reach the sensitive setting which is specifically designed for the lollipop head.

The sensitive setting is the last setting on the sonic brush handle.
 Note: The first 4 settings on the toothbrush handle are specifically designed for brushing your teeth. These settings automatically pause after every 30 seconds to remind you to brush the 4 different quadrants of your mouth.
 5. Now you are ready to use the Lollipop (for external use only). The Lollipop can be used for the following purposes:
 a. Clitoral stimulation. Raised bumps side or smooth side can be used to achieve maximum climax.
 b. Anal stimulation
 c. Breast and nipple stimulation
 d. Other external areas you desire to reach maximum stimulation
 6. Product is waterproof and can be used wet or dry.
 7. After enjoying the Lollipop, remove the Lollipop head. Use proper sex toy cleaning products to sanitize the Lollipop head before placing back in travel case. It is now ready for future use and more reasons to smile!

IPX 7  



Portable Sonic Toothbrush Kit

User Manual
 Model: MPPK001



Before using the product, please read this product manual carefully and keep it properly stored for future reference

Catalog

Safety instructions.....	3
Composition Introduction.....	4
User Guide.....	4-7
Fault Diagnosis.....	8
Waste Treatment.....	8
Product Warranty.....	9

Product configuration: 1pc toothbrush handle, 1pc charging box, 1pc brush head, 1pc Lollipop head, 1pc USB cable, 1pc user manual

Safety Instructions

For My Pleasure Plus Sonic Toothbrush, Please carefully read and follow the safety instructions before use.

Danger ⚠

- 1.If you do not understand the operation procedures and safety instructions of this product, please do not use to avoid personal injury caused by operating errors.
- 2.Please do not operate this product outside of its intended purposes noted in this manual.
- 3.Do not disassemble or change the parts of this product. Doing so may cause damage to this product or cause a high voltage electric shock which is not covered under product warranty.

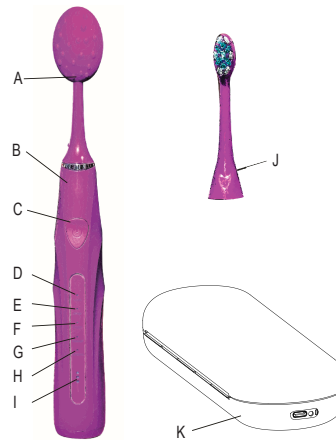
Warning ⚠

- 1.This product is used for cleaning, whitening, massaging gums, and polishing teeth. Do not use outside of its intended purpose.
- 2.To avoid possible product failure, fire, electric shock, explosion, or bodily harm, DO NOT submerge this product into water.
- 3.Before charging product, confirm product voltage meets local charging requirements.
- 4.Do not damage or modify the charging cable or power supply by stretching, bending, or twisting.Do not place heavy objects on the charging cable or power supply.
- 5.Use dry hands when unplugging charging cable before conducting maintenance.
- 6.Do not leave the product in hot or humid places.
- 7.Do not clean product in dishwasher.
- 8.If the travel case falls into water while charging, using dry hands unplug the power supply from wall socket first before picking up the product.
- 9.Use dry hands to plug or unplug power supply from wall socket.
- 10.If you experience dental issues, discontinue use, and consult with your dentist or dental professional.

Attention ⚠

- 1.This product is not a toy and is not designed or suitable for infants, toddlers, and small children.
- 2.This product does not have replacement or repairable parts. If this product no longer works, please contact My Pleasure Plus.
- 3.Please clean thoroughly after each use to prevent wear.
- 4.Please consult with your physician if you have had oral surgery in the last two months before using product.
- 5.This product meets the safety standards for battery devices.

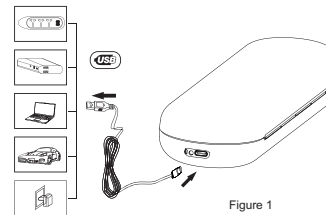
Composition Introduction



- | | |
|---------------------------------------|---|
| A.Lollipop Head | G.Gum Massage Mode |
| B.Handle | H.Sensitive Mode - Lollipop Head (does not pause after 30 second intervals) |
| C.Switch Button/Mode Selection Button | I.Power Indicator |
| D.Cleaning Mode | J.Toothbrush Head |
| E.Whitening Mode | K.Charging Box/Travel Box - Located on the bottom |
| F.Polishing Mode | |

User Guide

The following equipment can be used to charge the toothbrush.



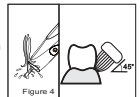
- 1.Remove excess water from toothbrush handle before placing inside charging box. Ensure the toothbrush handle is securely sitting on the bottom of charging box.
- 2.Connect the USB cable to the bottom of the charging box to charge the toothbrush. See figure 1 to choose how you will charge the toothbrush.
- 3.While toothbrush is charging, place the charging box (also known as the travel box) horizontally on a flat surface (as shown in Figure 1) to avoid the risk of product rollover during the charging phase.
- 4.Please note that it may take up to 24 hours to fully charge the toothbrush. The power indicator is composed of three lights on the handle. The lights will display the amount of charge left during use and while charging.
- 5.Please note that the bottom of the toothbrush may heat up slightly. This is normal.
- 6.Once your toothbrush is fully charged, you may disconnect the USB cable from the charging box. Store charging unit safely in a location you will remember. A fully charged toothbrush may hold a charge for up to 2 months depending on the purpose and number of uses and does not need to be charged daily. When you notice the toothbrush is not holding a charge, please charge again. This may take up to 24 hours.

For daily use, please follow the below step by step instructions:

- 1.Place the toothbrush head on the shaft rod as shown in the figure. Make sure brush head and toothbrush handle are clean. There is about 0.5 mm gap between the head and the end of the handle (Figure 3).



- 2.Rinse the toothbrush head and squeeze the desired amount of toothpaste on brush head. The brush head bristles are placed at a small angle at the gum line. (Figure 4)



- 3.Press switch button to turn on toothbrush and select preferred function mode.

- 4.Acoustic Function Modes (in the below order)
 - Clean: This standard brushing mode can effectively remove dental bacteria, remove food between teeth, remove residue and provide a deep cleaning leaving you with a fresh clean mouth.
 - Whitening: High frequency whitening brushing mode to whiten teeth.
 - Polishing: Effective in removing plaque leaving teeth smooth.
 - Gum Massage: Polishing mode improving blood circulation and strengthening teeth.
 - Sensitive: This mode is specifically designed for the Lollipop head (not for the brush head). There is no pause after 30 second timed intervals.

Note:

- 1.For brushing purposes, you can switch and choose between the first 4 different function modes by pressing the switch button. Wait 5 seconds to power off manually. Otherwise, the toothbrush will automatically power off after two minutes.
- 2.Sensitive Mode #5 is specifically designed and used for the Lollipop. The "sensitive" function mode does not pause after 30 second intervals.